

**Higher Education for ASEAN Talents (HEAT):
Scholarship Opportunity for ASEAN Faculty
Members in the Republic of Korea**

**2022-2 HEAT
Application Guidelines**

January 2022



한국대학교육협의회
Korean Council for University Education

2022-2 Higher Education for ASEAN Talents (HEAT): Scholarship Opportunity for ASEAN Faculty Members in the Republic of Korea

1 DESCRIPTION

The Korean Council for University Education (KCUE) in collaboration with the ASEAN-Korea Cooperation Fund (AKCF) launched the Higher Education for ASEAN Talents (HEAT), a full scholarship opportunity for ASEAN faculty members to support acquisition of a doctoral degree in Republic of Korea with the aim to enhance their expertise and promote people-to-people exchanges between Korea and ASEAN universities.

Each year 30 scholarship recipients (the ASEAN faculty members representing their university) from 10 ASEAN Members States will be selected (3 persons per country), and each person will receive a full scholarship for three years. KCUE will cover tuition, living expenses, and other costs. Participants will receive a Doctoral degree from a Korean university after completion of the program.

HEAT is funded from ASEAN-Korea Cooperation Fund (AKCF), and Korean Council for University Education (KCUE) is the implementing agency of the HEAT project. KCUE is a non-profit, non-governmental association of 4-year universities, representing the voice of member universities to increase autonomy and promote mutual cooperation between universities for the effective development of higher education in Korea.

2 NUMBER OF EXPECTED GRANTEES

Year 2022-2: 30 Candidates

**Country Quota and University Quota may vary depending on the application result.*

3 AWARD BENEFITS

Scholarship Period

- 3 years (Sep 1, 2022 ~ Aug 31, 2025)

Benefits

- Roundtrip travel (one time only): Round-trip economy class flight ticket
 - Monthly Allowance: 1,100 USD per month
 - Relocation (Settlement) Allowance (one time only): 300 USD upon arrival
 - Tuition: All admission fees are waived by the host institution
 - Dissertation Printing Costs: 400~600 USD, depending on the actual cost
 - Language Training Costs and Medical Insurance: the amount coverage or benefits will vary depending on each university
 - Others: Self-quarantine, various incidental allowances depend on each university
- * All grants will be paid in KRW, and amounts may vary depending on the exchange rate.*

4 ELIGIBILITY

KCUE requirements

- Applicants with ASEAN citizenship
- Applicants who are academic faculty members at a 4-year college/university * in their home country
(*Higher Education Institution offering bachelor's degree or equivalent courses)
- Applicants whose highest educational attainment is a master's degree or its equivalent.
- Applicants who are in good health both physically and mentally to allow them to pursue their studies while residing in Korea over the long term.
- Applicants who have discussed an academic leave of absence with the university they belong to and how to contribute to their school after their return.
- Applicants who are younger than 45 years old on the day that the doctoral program starts (i.e. Sep 1, 2022).
- Applicants who have a sufficient level of proficiency in Korean or English.

- Applicants who meet each university's additional requirements.

5 ELIGIBLE UNIVERSITIES AND FIELDS OF STUDY

Eligible Universities

- Chung-Ang University / www.cau.ac.kr
- Ewha Womans University / www.ewha.ac.kr
- Jeonbuk National University / www.jbnu.ac.kr
- Kangwon National University / www.kangwon.ac.kr
- Korea University / www.korea.ac.kr
- Kyung Hee University / www.khu.ac.kr

Applicants must apply for admission to only one university.

Available Courses

- Doctoral degree programs only

Available Fields of Study

No.	University	Division	Department
1	Chung-Ang University	Humanities·Social Science	· Korean Language and Literature
		Natural Science	· Chemistry · Food Science and Technology · Food & Nutrition
		Engineering	· Chemical Engineering and Materials Science · Electrical and Electronics Engineering · Computer Science and Engineering
		Medicine	· Medicine
		Nursing	· Nursing

Higher Education for ASEAN Talents (HEAT):
Scholarship Opportunity for ASEAN Faculty Members in the Republic of Korea



2	Ewha Womans University	Liberal & Social Science	<ul style="list-style-type: none"> · International Studies · Korean Studies · Interpretation and Translation · Political Science & Int'l Relations · Korean Education · North Korean Studies · English Language & Literature · Social Welfare · Women's Studies · Education · Business Administration
		Natural Sciences	<ul style="list-style-type: none"> · Nutritional Science & Food Management · Nursing Science · EcoScience · Pharmaceutical Sciences · Industrial Pharmaceutical Science
		Engineering	<ul style="list-style-type: none"> · Artificial Intelligence and Software(Computer Science and Engineering)
3	Jeonbuk National University	Engineering	<ul style="list-style-type: none"> · Nano Convergence Engineering · Computer Science and Engineering · Electronic Engineering
		Medicine	<ul style="list-style-type: none"> · Veterinary Medicine · Medical Science · Medicine
4	Kangwon National University	Humanities and Social Sciences	<ul style="list-style-type: none"> · International Trade · Agricultural & Resource Economics

5	Korea University	Engineering	<ul style="list-style-type: none"> · Civil, Environmental and Architectural Engineering
6	Kyung Hee University (Seoul Campus / Global Campus)	Humanities and Social Sciences	<ul style="list-style-type: none"> · Korean Language and Literature (Seoul) · Tourism (Seoul) · International Korean Language and Culture (Global) · British-American Language and Culture (Global) · International Development Cooperation (Global)
		Natural Science	<ul style="list-style-type: none"> · Physics (Seoul) · Biotechnology (Global) <ul style="list-style-type: none"> - Genetic Engineering - Food Science and Biotechnology - Oriental Medicinal Materials Engineering - Advanced Materials of Plants - Plant Biotechnology
		Engineering	<ul style="list-style-type: none"> · Information Display (Seoul) · Architectural Engineering (Global) · Mechanical Engineering (Global) · Civil Engineering (Global) · Electronic Engineering (Global) · Computer Science and Engineering (Global)

** For more information on universities and programs, please refer to **Attachment 2***

6 APPLICATION SUBMISSION

Place of Submission: University Admission's Office

*Applicants are to submit applications by airmail or online to one of the six designated universities directly. For further information, please check **Attachment 2***

Deadline of Submission

University	Deadline of Submission
Chung-Ang University	2022. 4. 8.
Ewha Womans Univeristy	2022. 3. 18.
Jeonbuk National University	2022. 3. 14. ~ 3. 25.
Kangwon National University	2022. 3. 2. ~ 3. 11
Korea University	2022. 3. 7. ~ 3. 25.
Kyung Hee University	2022. 3. 18

Required documents

- FORM 1. PERMISSION FOR STUDY LEAVE
- FORM 2. APPLICANT AGREEMENT
- FORM 3. PERSONAL MEDICAL ASSESSMENT
- Original Certificate of Bachelor's and Master's Degree and each Transcript
- Certificate of Employment
- Applicant's Proof of Citizenship Documents
- * Universities' additional requirement: please refer to **Attachment 2**

Note

- Any fraudulent or incomplete applications will be disregarded and even if a grantee has been selected, he or she will forfeit the scholarship if the application is found fraudulent.

7 SELECTION PROCEDURES

Selection Procedure

- The call for applications will be announced at KCUE & universities' websites
- Applicants submit applications to one of the 6 designated universities.
 - * Applicants must apply for this program through only one university. Applicants who submit applications to more than one university will be disqualified immediately.
- (1st Round) Applicants must be selected by universities.
- (2nd Round) Applicants who have passed the first round will be assigned by KCUE after consideration of nationality.
- ASEAN SOM-ED will note the list of the grantees.

Selection Criterion

- Academic Ability: All documents including transcripts, self-introduction, study plan, certificates of language proficiency (Korean and/or English), recommendations, published papers and awards, etc. will be evaluated by the university.
- Future Contribution: Applicants should consult with the university they belong to (or with their Ministry of Education) very thoroughly regarding their academic leave of

absence for the duration of their doctoral studies in Korea and how to contribute to their school when they return home after finishing their studies in Korea.

** Applicants must submit a letter that contains the official seal of their university president confirming their employment status at the university, as well as the university president's approval on their study plans in Korea.*

Timeline

- Application Submission: January ~ March
- 1st Round of Selection: March / 2nd Round of Selection: April
- Announcement of 2022-2 HEAT Scholars: June (notification by the universities)
- Applying for Korean VISA: July, 2022
- Entry into Korea: by August, 2022
- Course Start Date: September 1st, 2022

8 CONTACT

KCUE Contact

Jeongyoon Won, International Cooperation Team, KCUE

Phone: +82-2-6919-3917 / Fax: +82-2-6919-3820

E-mail: joannawon89@kcue.or.kr

The guidelines and university information will be available at the HEAT website:

- www.heatscholar.kr

University Contact

- Contact Person: Attachment 1
- More information on admission/programs: Attachment 2

ATTACHMENT #1

University Information

University	Name/Email	Phone/Fax	Address & Website
Chung-Ang University (Office of International Affairs)	Jain Rhee international@cau.ac.kr	82-2-820-6531/82-2-813-8069	Address: 84 Heukseok-ro, Dongjak-gu, Seoul, Korea Website: http://oia.cau.ac.kr
Ewha Womans University	Sunghee Oh shee@ewha.ac.kr	82-2-3277-6988	Address: 52, Ewhayeodae-gil, Seodaemun-gu, Seoul 03760 Republic of Korea Website: http://www.ewha.ac.kr
Jeonbuk National University (Office of International Affairs)	(admission) Seulki Park admission@jbnu.ac.kr	82-63-270-4382 82-63-270-2857	Address: 567 Baekje-daero, Deokjin-gu, Jeonju-si, Jeollabuk-do, 54896 Republic of Korea Website: http://www.jbnu.ac.kr/eng/
Kangwon National University (Office of International Affairs)	Solnim Park intn1947@kangwon.ac.kr	82-33-250-7194 82-33-259-5522	Address: (Chuncheon campus) 1 Gangwondaehakgil, Chuncheon-si, Gangwon-do, 24341 Republic of Korea Website: http://www.kangwon.ac.kr/english
Korea University (School of Civil Environmental and Architectural Engineering)	<u>Program:</u> Hyunju Lee aseanace@korea.ac.kr <u>Admission:</u> graduate1@korea.ac.kr	<u>Program:</u> inquire via e-mail <u>Admission:</u> inquire via e-mail	Address: 145 Anam-ro, Seongbuk-gu, Seoul, 02841, Korea Website: http://ace.korea.edu/ Website: http://graduate2.korea.ac.kr/
Kyung Hee University	(Seoul) Lee, Yong Sung khsb2000@khu.ac.kr (Global) Jeong, Hyunhyang khwb6000@khu.ac.kr	(Seoul) +82-2-961-0121~4 (Global) +82-31-201-3501~4	(Seoul) 26 Kyunghee-daero, Dongdaemun-gu, Seoul 02447, Korea Website : gskh.khu.ac.kr (Global) 1732 Deogyong-daero Giheung-gu, Yongin-si, Gyeonggi-Do 17104, Korea Website : gskh.khu.ac.kr

ATTACHMENT #2-1 CHUNG-ANG UNIVERSITY

I. Overview of the University

- A leading Private Comprehensive University established in 1918
- Two Campuses: Seoul & Anseong
- Faculties: 15 Colleges and 17 Graduate Schools
- Students: 23,584 (Over 3,789 international students)
- Ranked 7th in 2019 Joong Ang Ilbo University Evaluation
- Ranked 69th in 2019 THE(Times Higher Education) Asia Ranking
- Ranked 412th in 2020 QS World University Ranking

Chung-Ang University has been a leading comprehensive private university over one hundred years in providing the high quality of higher education and in conducting a variety of cutting edge research activities. Worldwide, Chung-Ang University is also acclaimed as the hub of "Korean Cultural Wave" with its excellent arts programs in areas such as theater, film-making, photography, traditional Korean music and performance. The unique strength of its international education derives from its cross-cultural academic programs which firmly maintain diversity and intensity.

II. Academics

Academic Programs

○ Graduate School (Doctoral Programs)

Division	Department	Remarks	Language
Humanities· Social Science	Korean Language and Literature	http://build.cau.ac.kr/caukorean/	Korean
Natural Science	Chemistry	http://chem.cau.ac.kr/new_chem/	Korean/English
	Food Science and Technology	http://food.cau.ac.kr/	Korean/English
	Food & Nutrition	http://cobiotech.cau.ac.kr/	Korean/English
Engineering	Chemical Engineering and Materials Science	http://chemeng.cau.ac.kr/sub03/index.php?PageNum=1	Korean/English
	Electrical and Electronics Engineering	http://eehome.cau.ac.kr/sub/gs_lab1.php	Korean/English

Higher Education for ASEAN Talents (HEAT):
Scholarship Opportunity for ASEAN Faculty Members in the Republic of Korea



	Computer Science and Engineering	http://www.cse.cau.ac.kr/graduate/graduate01.php	Korean/English
Medicine	Medicine	http://med.cau.ac.kr/site/main/index001.do	Korean/English
Nursing	Nursing	http://nursing.cau.ac.kr/	Korean/English

Application

○ Application Period: ~ 2022.4.8

○ Required Documents: Original Documents should be submitted by airmail.

E-mail	Address
international@cau.ac.kr	대한민국 서울특별시 동작구 흑석로 84 중앙대학교 201 관 104 호 국제교류팀 Office of International Affairs, no.104, Building 201, Chung-Ang University, 84 Heukseok-ro, Dongjak-gu, Seoul, South Korea (Postal code: 06974)

- All the required documents will be stated on application guideline.
- After submission, if there are any additional supporting documents necessary such as documents related to applicant's academic background or nationality, you will be informed.

No.	Required Documents	Ph.D.	Reference
1	Application form	O	Application form must be printed and signed after completion
2	Study Plan	O	
3	A Certificate of Graduation (Bachelor's Degree) (or Apostilled Diploma) [Original]	O	- Academic documents should be <u>Original Documents in English or Korean</u> <u>- All Academic documents must be either apostilled or certified by the Korean Embassy.</u>
4	A Certificate of Graduation (Master's Degree) (or Apostilled Diploma) [Original]	O	- Academic documents in other languages should be submitted with notarized translation.
5	Official transcript (Bachelor's Degree) [Original]	O	- Official Transcript should include CGPA either in percentile or scales.
6	Official transcript (Master's Degree) [Original]	O	- If there is no CGAP information in percentile or scale, you should submit additional supporting document issued by the university or please visit the following website. (http://www.wes.org/students/igpalc.asp)

Higher Education for ASEAN Talents (HEAT):
Scholarship Opportunity for ASEAN Faculty Members in the Republic of Korea



한국대학교육협의회
Korean Council for University Education



ASEAN-KOREA
COOPERATION
FUND
Collaborate. Communicate. Create.

7	Two Letters of Recommendation	O	- Recommendation letter should be in English or in Korean - Sealed in envelopes, addressed to the Office of international affairs - Mandatory for all Ph.D. applicants and all CAYSS Scholarship applicants
8	List of the articles	O	
9	One copy of each published article or manuscript (including thesis)		
10	Korean or English Proficiency Test Reports [Original]	Holders Only	- Korean : Certificate of TOPIK - English: Valid IBT TOEFL or IELTS, TEPS score report
11	A legal Certificate of Family Relationship issued by Government office	O	- Notarized documents are valid within 6 months from the notarized date. Notarized Certificate of Family Register
12	A copy of National Identification card (Applicant's and Both Parents')	O	
13	A Copy of Applicant's Passport	O	
14	Degree Verification Form	O	Required for graduates from foreign Universities. Applicants of Korean or Chinese universities can get exception
15	Employment Certificate	O	

※ **IMPORTANT**

a. All academic background documents must be original or apostille, notarized by the Korean Embassy.

b. All documents in languages other than English or Korean must be accompanied by a notarized English or Korean translation (except a copy of passport, ID and alien registration card).

c. Notarization of documents must be from the issuing country. In addition, notarization in Korea is not acceptable.

d. All submitted documents will not be returned.

○ Assessment will be based on the submitted application documents and if interview is necessary, the schedule will be informed individually.

Important Notes

- All application documents must be original or properly certified copies of the originals.
- All documents (except a copy of passport, ID and alien registration card) in a language other than English or Korean must be accompanied by a notarized English or Korean translation.
- All submitted documents will not be returned.

Further Notice

1) CAU On-campus Dormitories

- Two Dormitory Buildings built in year 2010, 2015
- Fees: Approx. \$200USD (Quad Room) ~ \$300USD (Double room) per month
- Facilities: Gym, Laundry Room, Seminar Rooms (Group Study)

2) Cultural Activities for International Students

- 3-4 times per semester
- Participation fee is free

Point of Contact

Department	Name	Contact			
		Phone	Fax	E-Mail	Website
국제교류팀 Office of International Affairs	이재인 (Jain Rhee)	82-2- 820- 6531	82-2- 813- 8069	international@cau.ac.kr	http://oia.cau.ac.kr/

ATTACHMENT #2-2 EWHA WOMANS UNIVERSITY

I. Overview of the University

1. History

From a single student in 1886, Ewha grew into an extensive community of 250,000 women. In 1910, Ewha established four-year College Courses, and in 1914 produced its first three female graduates, laying a foundation to nurture female professionals and leaders. The outstanding talents that Ewha has produced over the past 136 years now seek to direct our times towards a better world.

At a time when women were excluded from participating in many areas in society, Ewha paved the way for women's education. The talent produced by Ewha has proven women's abilities in various fields, driven change and excelled at every opportunity. The first-rate quality of Ewha's education and the challenging spirit of the women of Ewha are well represented in society today and reflected by various indicators.

2. Key Information

Main Features of the Higher Education for ASEAN Talents (HEAT) Program at Ewha Womans University

- Full tuition support for up to 2 semesters for students whose period of study exceeds the original 3 years (must reside in Korea)
- Departmental support (according to the policy and regulations of each department) for conference participation and publishing articles in academic journals, financial support for conference presentations
- Special orientation for incoming students: campus and library tours, historical and cultural excursions, etc.
- EAASIS program: assignment of a designated professor and student mentor through the Ewha Academic Assistance System for International Students (EAASIS) program, to receive departmental support to improve academic performance, develop sense of belonging, etc
- Support for learning Korean language
- Networking events and other special lectures
- Guaranteed dormitory placement during entire period of study
- Full financial support for National Health Insurance while residing in Korea

Higher Education for ASEAN Talents (HEAT):
Scholarship Opportunity for ASEAN Faculty Members in the Republic of Korea



- Assignment of common space for research purposes

II. Academics

1. Academic Programs

- Graduate School (Doctoral Programs)

Division	Department	Specialization
Liberal & Social Sciences	International Studies	International Trade, International Business, Development Cooperation, International Relations
	Korean Studies	Korean Culture, Teaching Korean as a Foreign Language
	Interpretation and Translation	Interpretation and Translation
	Political Science & International Relations	Political Philosophy, Comparative Politics, International Politics, Korean Politics
	Korean Education	Korean Education
	North Korean Studies	North Korean Politics, North Korean Economics, North Korean Society and Culture, Unification and Peace
	English Language & Literature	Literature, Linguistics
	Social Welfare	Social Welfare
	Women's Studies	Family, Work, Sexuality, Feminist Theory, Women's Policy
	Education	Philosophy of Education, Sociology of Education, Educational Administration, Curriculum & Instruction, Educational Measurement & Evaluation, educational psychology, Lifelong Education, educational counselling and psychology, Educational Big Data
	Business Administration	Management Decision Science, Marketing, Finance, Human Resource. Strategic Management, Accounting, Management Information System

Natural Sciences Engineering	Nutritional Science & Food Management	Food and Nutrition, System Health and Engineering Convergence Major
	Nursing Science	Woman/Man Health Nursing, Woman's Health Nursing, Child Nursing, Mental & Psychiatric Nursing, Basic Nursing, Community Nursing, Nursing Management, System Health and Engineering Convergence Major
	EcoScience	EcoScience(Systematics, Evolution, Behavior) EcoScience(Ecology, Environment) EcoScience(Ecoconvergence)
	Pharmaceutical Sciences	Pharmaceutical Sciences
	Industrial Pharmaceutical Science	Industrial Pharmaceutical Science
	Artificial Intelligence and Software	Computer Science and Engineering

2. Application

- Admission Notice: <http://isa.ewha.ac.kr> → Admissions → ASEAN HEAT Scholarship
- Application Deadline: March 18 (FRI), 2022
- Submission of Application and Supplemental Materials: submit via both email and post

1) Submit scanned copies first via email (shee@ewha.ac.kr)

2) Submit original documents by post to the address below

HEAT Scholarship Program Coordinator International Student Affairs Team, Ewha Womans University ECC B329,
52 Ewhaycodae-gil, Seodaemun-gu, Seoul, 03760 Republic of Korea

• Eligibility

1. Applicants who meet the KCUE application requirements

2. Education: Applicants who have completed a graduate program and have acquired a Master's degree before August 2021

2. Language Proficiency: Applicants must meet at least one of the requirements below

A. Test of Proficiency in Korean (TOPIK) Level 4 or above

B. Completion of Level 4 or above of the Korean Language Intensive program at Ewha Language Center

C. English Proficiency Test Scores: TOEFL (PBT 550, iBT 80), IELTS 6.0 or above

D. Completion of university or graduate school education conducted entirely in Korean or English

E. Ewha's recognition that the applicant's level of Korean or English proficiency is equivalent to or higher than the above A-D requirement

List of Required Documents

No.	Document	Required (Y/N)
1	KCUE Form 1. Permission for Study Abroad	Y
2	KCUE Form 2. Applicant Agreement	Y
3	KCUE Form 3. Personal Medical Assessment	Y
4	Ewha Womans University HEAT Program Application	Y
5	Official Bachelor's Degree Diploma	Y
6	Official Undergraduate Academic Transcript	Y
7	Official Master's Degree Diploma	Y
8	Official Master's Program Academic Transcript	Y
9	Certificate of Employment	Y
10	CV (include list of publications, articles, etc.)	Y
11	Copy of Applicant's Passport (Proof of Citizenship)	Y

12	Official Language Proficiency Test Score Reports	N*
13	Copies of Awards	N

*Applicants without an official language proficiency test score may be contacted for an interview.

3. Important Notes

- Selection Process: Applicants will be selected through a comprehensive evaluation of their academic capability, language proficiency, preparedness in the chosen major, academic motivation, etc. shown in their submitted materials.

- ※ Some applicants may be contacted individually for a phone or zoom interview if necessary.

- Applicants may be contacted individually by phone or email for additional documents if necessary. Therefore, it is important that applicants provide an accurate phone number and email address at which they can be directly reached. Ewha Womans University will not be responsible for any disadvantages caused by incorrect contact information provided by the applicants.

- Any matter not specified in this admissions guide with regard to the university's special admissions process for international applicants shall be settled pursuant to the decision of admissions related committees of Ewha Womans University.

- Details of the selection process and scores will not be disclosed.

- Applicants who fail to submit all required documents will be excluded from consideration for admission.

- If a misrepresentation is discovered during the application process, or the applicant is found to have made any alterations to the application materials (including those submitted by a proxy) or perpetrated any type of fraud, the applicant will be denied admission. If the applicant has already registered, she will be asked to leave the University. This applies even if the fraudulence has had no immediate effect on the applicant's admission. Any and all such applicants whose admission has been revoked due to this issue will be prohibited from reapplying in the future.

- 2022 incoming students are required to do a medical check-up administered by the Ewha University Health Service Center (scheduled for the beginning of each semester). If the student is found to have a disease or physical disability that may interfere with her academic performance, she must comply with the university's decision to take a leave of absence or to make other arrangements.

4. Housing Information

- E-house is unit form (sharing dining room, rest room, shower room).

- E-house is composed of 1~4 bedroom types per 1 unit. (Graduate students are assigned to single/double/triple room)

- ※ Dormitory website : <http://my.ewha.ac.kr/engdorm> → Facilities → Rooms → E-House pictures & Floor plan

Higher Education for ASEAN Talents (HEAT):
Scholarship Opportunity for ASEAN Faculty Members in the Republic of Korea



- There can be diversity issues since the dormitory is a shared community space (Example : noise, communication problems among room/unit mates, etc.)
- Male staffs can enter a room/unit for repair work.

5. Point of Contact

Department	Name	Contact			
		Phone	Fax	E-Mail	Website
International Student Affairs Team	Sunghee Oh	+82-2-3277-6988	+82-2-3277-7175	shee@ewha.ac.kr	http://isa.ewha.ac.kr



ATTACHMENT #2-3 JEONBUK NATIONAL UNIVERSITY

I. Overview of the University

1. History

- Jeonbuk National University is the first national university in the Jeolla and Chungcheong provinces that was found in 1947. JBNU has led the development of this regions since it's foundation with a history and traditions. Based on the growth of the past 70 years, JBNU will do its best to develop into a cradle of creative talent that will lead the world.
- 2018. 03. 01 : Global Frontier College was established.
- 2017. 01. 02 : JBNU Korea Center opened in Pasundan University, Indonesia.
- 2016. 10. 17 : New Silk Road Center (center for international exchange) opened.
- 2015. 12. 07 : Center for International Student Services was launched.
- 2012. 06. 13 : Saemangeum-Gunsan Campus opened.
- 2012. 03. 13 : Gochang Campus opened.
- 2008. 03. 01 : Jeonbuk National University and Iksan National College were integrated as 'Jeonbuk National University.'
- 1952. 11. 01. : Graduate School was established.
- 1951. 10. 06. : Provincial Iri Agricultural College, Jeonju Myeongnyun College and Gunsan College were consolidated as Chonbuk National University, with 5 colleges (Engineering, Agriculture, Letters and Sciences, Law, and College of Commerce) and 16 departments.
- 1947.10.15. : Provincial Iri Agricultural College was founded. (Opening ceremony: 1948. 4. 5.)

2. Key Information

- The international competitiveness of Jeonbuk National University is already recognized in the world, and its known for its high public confidence in QS World University Rankings, THE(Times Higher Education) World University Rankings, Reuters Asia Pacific's Most Innovative University, Leiden Ranking Portion of papers in the TOP 1%/10% of Paper Citation Counts through JBNU ranked 1st or 2nd among the national universities in Korea.
- it is a first national university to open an era of 100 billion won funding including the largest plant farm-LED Agriculture & Life Science Convergence technology research Center, High-enthalpy Plasma Research Center, Los Alamos National Laboratory-JBNU Engineering Institute Korea, etc.

Higher Education for ASEAN Talents (HEAT):
Scholarship Opportunity for ASEAN Faculty Members in the Republic of Korea





II. Admission Guide

1. Academic Programs

- Graduate School (Doctoral Programs)

Field	Major	Language in Lecture	Language Required	Website
Engineering	Nano Convergence Engineering	E	-	https://nce.jbnu.ac.kr
	Computer Science and Engineering	K, E	K1, E2	https://cse.jbnu.ac.kr/
	Electronic Engineering	K, E	K2, E1	https://eei.chonbuk.ac.kr/
Medicine	Veterinary Medicine	K, E	K4, E1	http://vetmed.jbnu.ac.kr
	Medical Science	K, E	-	http://med.jbnu.ac.kr
	Medicine	K, E	-	http://med.jbnu.ac.kr

- K1 : TOPIK L.1, Completion of a Korean Language L.1, K2 : TOPIK L.2, Completion of a Korean Language L.2, K4 : TOPIK L.4, Completion of a Korean Language L.4

- E1 : TOFEL iBT 71, IELTS 5.5, TEPS 600, New TEPS 326, E2 : TOEFL iBT 90, IELTS 6.0, TEPS 634, New TEPS 346

2. Application

- Application Period: 14 of March, 2022 to 25 of March, 2022
- Application Methods: after Online submission (<http://uwayapply.com>), submit original documents by post mail

- Place for application

Category	Notes
Department	Office of International Affairs
Name	Park Seulki
Tel	+82-63-270-4382
E-mail	admissiong@jbnu.ac.kr
Address	Office of International Affairs, Jeonbuk National University, 567 Baekje-daero Deokjin-gu Jeonju-si, Jeollabuk-do, KOREA zip:54896

3. Important Notes

- Eligibility for Application: Applicants should prove all of the Eligibility below

Category	Notes
Nationality	Applicant and both of applicant's parents must be foreigners
Degree	Applicants must hold a Master's degree or a diploma that is equivalent to or higher than a Master's degree
Work experience	<ul style="list-style-type: none"> • Applicants who are academic faculty members at a 4-year college/university * in their home country • Medicine : Those with Bachelor's degree in Medicine
Language Proficiency	<ul style="list-style-type: none"> • Computer Science and Engineering - Korean(TOPIK Level 1), English(IELTS 6.0) or higher • Electronic Engineering - Korean(TOPIK Level 2), English(IELTS 5.5) or higher • Veterinary Medicine - Korean(TOPIK Level 4), English(IELTS 5.5) or higher • Other majors - Applicants should be able to attend classes in Korean or English
etc	Applicants who are younger than 45 years old on the day that the doctoral program starts (i.e. March 1, 2022).

- Required Documents

	Documents	Remarks
1	Application Receipt	• Print out after completing the online application
2	Application for Admission	• Print out after completing the online application
3	Research Plan	• Print out after completing the online application

Higher Education for ASEAN Talents (HEAT):
Scholarship Opportunity for ASEAN Faculty Members in the Republic of Korea



4	Permission for Study Leave	• [Form1 by HEAT] Must be signed by the current in-service university president
5	Applicant Agreement	• [Form2 by HEAT] Must be signed
6	Personal Medical Assessment	• [Form3 by HEAT] Must be signed
7	Recommendation letter from a Prospective Supervising Professor	• [Form4 by JBNU] Must be uploaded online
8	One Recommendation Letter from the professor of applicant's graduating school	• [Form5 by JBNU] • It should be sealed in an official envelope or stamped by the recommender. If not, submit through Email by professor directly.
9	Verification documents of Bachelor's Degree	<ul style="list-style-type: none"> • Submit verification documents from Korea Embassy • Those who graduated University in Korea don't need to submit it. • Original verification must be submitted.
10	Verification documents of Master's Degree	
11	Official Master's Transcript	<ul style="list-style-type: none"> • Must be uploaded online. • Original certificate/transcript or notarized copy ※ Transferees must submit an original copy of Official Transcript from the college where you attended before transfer.
12	Certificate of Employment	• Must be signed by the current in-service university president
13	Certificate of Language Proficiency	<ul style="list-style-type: none"> • Submit a language Score that meets the language qualification requirements for each department • Certificate must be valid at the time of application and must not exceed 2 years of issue
14	Submit at least one of two conditions 1) Proof of Family Relations 2) Documents that prove you have completed elementary school, middle school, high school outside Korea	1) e.g. birth certificate, Family certificate, Divorce Certificate - Original or notarized copy 2) e.g. the entire transcript or graduation certificate issued overseas, certificate of Exit or Entry from Immigration Office in Korea - Original or notarized copy
15	Applicant's Passport Copy	• Copy must be of a valid passport

4. Support programs and Dormitory information

○ Korean Language Course: if desired

Category	Notes
Period	14weeks / 70hours
Time	Mon-Fri, 13:00~13:50

Level	Basic, Intermediate, Advanced (Level test required)
Note	Foreign language test*(Mandatory) exempted when the Korean language course completed * Ph.D candidate must pass the foreign language text

- Korean cultural Experience program: if desired

Category	Notes
Program	Korean Culture Experience (Making Traditional Food, Experience Traditional Music-Pungmul, etc)
Note	First selected when they apply for regular programs

- Dormitory

- How to apply: An applicant who wishes to live in the Residence Hall must check on the Application Form.

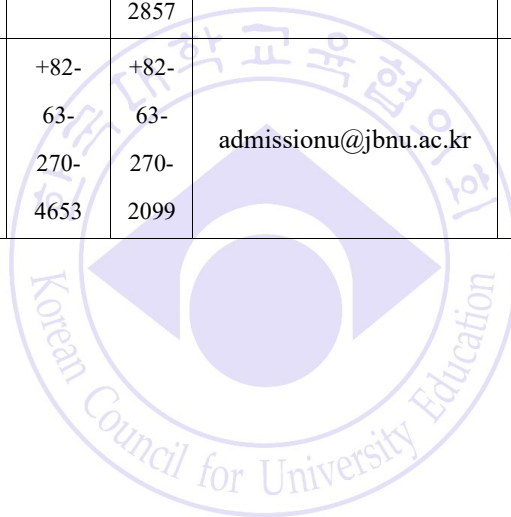
- Dormitory Hall

Hall	Meal		Equipment
Chambit	Included	3 Meals(week day) Korean/Western style	Double occupancy, Desk, Chair, Closet, Air conditioner, Bathroom, Washroom
Daedong(Male) Pyeonghuwa(Female)	Optional	Included	Double occupancy, Desk, Chair, Closet, Air conditioner, Public Restroom and shower room, public fridge (in a corridor of each floor)
		Excluded	
Cheongwoon	Excluded	No meal	Double occupancy, Desk, Chair, Closet, Air conditioner, Bathroom, Washroom * Only for students in veterinary science



5. Point of Contact

Department	Name	Contact			
		Phone	Fax	E-Mail	Website
Office of International Affairs (admission)	Park Seulki	+82-63-270-4382	+82-63-270-2857	admissiong@jbnu.ac.kr	http://www.jbnu.ac.kr/eng
Office of International Affairs (Program)	Yum Joungmin	+82-63-270-4653	+82-63-270-2099	admissionu@jbnu.ac.kr	http://www.jbnu.ac.kr/eng



ATTACHMENT #2-4 KANGWON NATIONAL UNIVERSITY

I. Overview of the University



Kangwon National University, boasting of its 70-year history as one of nine core national universities in the Republic of Korea, has been making sincere efforts to respond to the rapidly-changing global era. The main campus of KNU is located in Chuncheon city, and we have 115 departments in both undergraduate

and graduate programs.

KNU has more than 22,000 students in total, and we have 1,130(April, 2019) international students in undergraduate and graduate programs. We have more than 2,500 academic faculties including 987 faculties in tenure-track.

Particularly, KNU has been actively participating in various international development cooperation activities with many developing countries. As a regional stronghold university, KNU has also been endeavoring to concentrate creative ideas and resources on local communities and the regional industries.

History

- 1947.06.14. Kangwon Provincial Chuncheon Agricultural College established
- 1968.03.01. First graduate school founded
- 1978.03.01. Promoted to university status as Kangwon National University
- 2000.05.18. Kangwon National University Hospital established
- 2004.01.10. Kangwon National University Industrial cooperation Co. Founded
- 2006.03.01. Kangwon National University merged with Samcheok University
- 2008.03.01. School of Medicine established
- 2009.03.01. School of Law established
- 2009.03.01. Second Samcheok Campus opened

Higher Education for ASEAN Talents (HEAT):
Scholarship Opportunity for ASEAN Faculty Members in the Republic of Korea



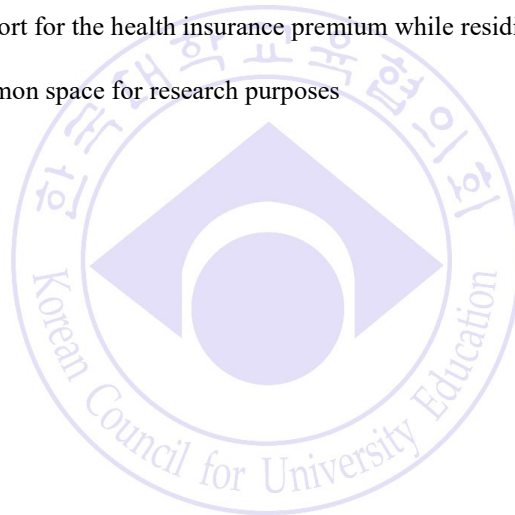
- 2011.09.01. Wi-fi fully installed for Chuncheon Campus
- 2016.06.07. Prof. Kim Heon Young, elected as the 11th president of the University
- 2019.03.01. Master Degree: 106 departments, 14 interdisciplinary programs and an entrance quota of 579 students; Doctoral Degree: 83 departments, 13 interdisciplinary programs and an entrance quota of 262 students.

Key Information

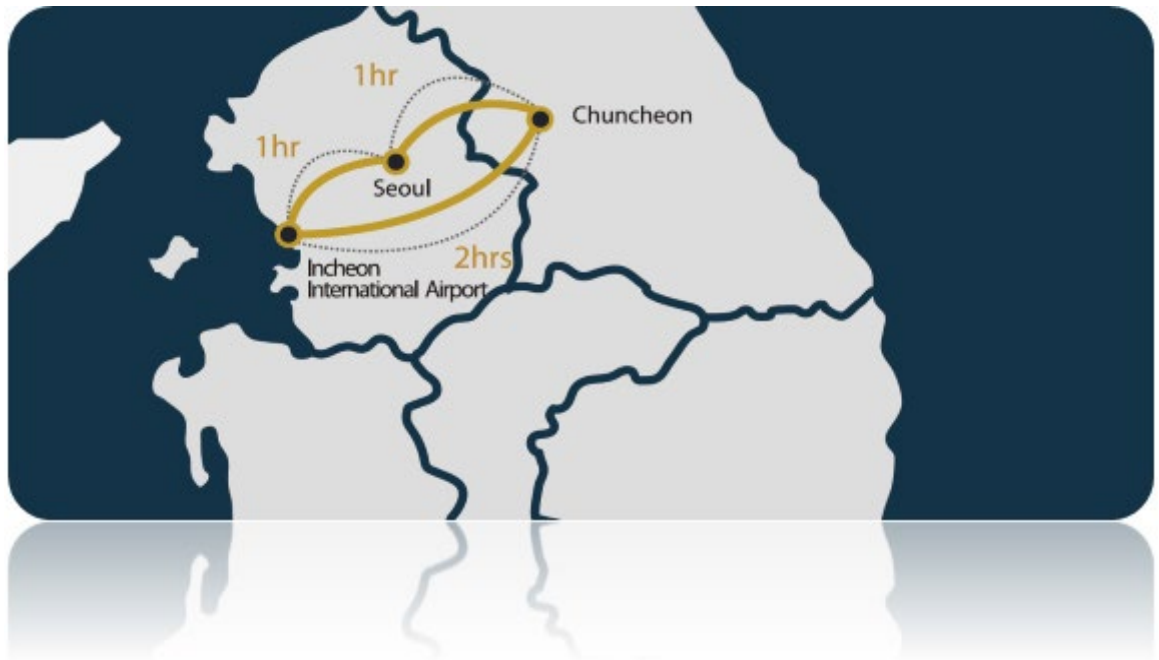
- One of the top 9 national universities with excellent faculties, distinguished programs and highly qualified academic staff
- Starting from 2016 KNU has been accredited by International Education Quality Assurance System for 4 years consecutively
- Offers much lower tuitions and housing fees than other schools.(Approx. 50% lower compared to private universities)
- All international freshmen students are provided with dormitory housing when requested. (Cooking facilities available)
- Diverse Korean culture programs for international students and free of charge Korean language classes
- Located at the heart of the Kangwon Province, Chuncheon is approximately 1 hour away from the Seoul metropolitan area and it is considered to be the most desired city to live in Korea
- 298 partner universities from 58 countries
- World University Rankings
 - 2020 QS Asia World University Ranking World Rank: 215, National Rank: 30
 - 2020 US News&World Report: World Rank 885; National Rank 22
 - 2020 THE University Impact Rankings: World Rank 1000+, National Rank 25

Main Features of HEAT Program at Kangwon National University

- Customized 3 Year Plan of Study: assistance in developing a customized 3-year plan of study tailored to the subject field of the student's major and thesis with academic advisors.
- Departmental support (in accordance with the policies and regulations of each department) for conference participation and research publications in academic journals, providing financial support for conference presentations.
- Special orientation for incoming students: campus tour, historical and cultural excursions, including experiencing the DMZ tour.
- Support for learning Korean language
- Support for Self-Quarantine (COVID-19 prevention measures)
- Guaranteed dormitory placement during the entire period of study
- Full financial support for the health insurance premium while residing in Korea
- Allocation of common space for research purposes



Location



Address:

(CHUNCHEON CAMPUS) 1 GANGWONDAEHAKGIL, CHUNCHEON-SI, GANGWON-DO,
24341 REPUBLIC OF KOREA

(SAMCHEOK CAMPUS) 346 JUNGANG-RO, SAMCHEOK-SI, GANGWON-DO,
25913 REPUBLIC OF KOREA

(DOHYE CAMPUS) 346 HWANGJO-GIL, DOGYE-EUP, SAMCHEOK-SI, GANGWON-DO,
25945 REPUBLIC OF KOREA

Website: <http://www.kangwon.ac.kr/english>

II. Application Guidelines

1. Academic Programs

- Graduate School (Doctoral Programs)
- Campus: Chuncheon Campus
- Programs:

Programs	Ph.D. Degree	Enrollment	Note
International Trade	Ph.D. in Business Administration	5	Program Language: English
Agricultural & Resource Economics	Ph.D. in Economics		

2. Qualifications of Applicants

- Applicants must be a citizen of any ASEAN member countries and be a faculty member of one university in the country of his/her citizenship.
- Applicants must have a master's degree or an equivalent degree accredited by a legal accreditation agency.
- Applicants should have adequate health, both mentally and physically, to stay in a foreign country for a long time.
- Applicants must show evidence that upon admission, she/he will have a permission for taking a leave of absence from her/his university.
- Applicants Should be under 45 years age at the date of entrance. (Sep 1, 2022)
- Applicants must be fluent in English.
- Applicants' parents must not hold Korean citizenship.

3. Submission and Required Documents

- Application Submission
 - a. Application Period: March 2(Wed) – March 11(Fri)
 - b. Application Submission: intn1947@kangwon.ac.kr, after original documents by post mail

○Place for Application (Contact)

Category	Notes
Department	Office of International Affairs
Name	Solnim Park
Tel	+82-33-250-7194
E-mail	intn1947@kangwon.ac.kr
Address	Office of International Affairs, Kangwon National University, Kangwondaehak-gil 1, Chuncheon-si, Kangwon-do, South Korea Zip:24341

○ Required Documents

	Requirements	Notes
1	KCUE Form 1. Permission for Study Abroad	KCUE Form 1
2	KCUE Form 2. Applicant Agreement	KCUE Form 2
3	KCUE Form 3. Personal Medical Assessment	KCUE Form 3
4	KNU-HEAT Application	KNU Form 1
5	Study plan	KNU Form 2
6	Recommendation letter	from the Dean of a current affiliation
7	Resume	
8	English proficiency certificate	only relevant person
9	Copy of published papers	only relevant person
10	Degree certificates	1) Undergraduate 2) Master's Degree
11	Transcripts	1) Undergraduate

Higher Education for ASEAN Talents (HEAT):
Scholarship Opportunity for ASEAN Faculty Members in the Republic of Korea



		2) Master's Degree
12	Certificate of employment	
13	Copy of applicant's passport	
14	Copy of ID cards of parents respectively	
15	Original and translated copy of the Family Relation Certificate	issued by the government organization

4. Important Notice about Application Submission

- All documents must be the original. If original documents are not in English, an English translation (by issuing organization or authenticated copy) must be attached to the documents
- If it is impossible to submit the original copy, the copy checked against the original certificate by the issuing organization or an authenticated copy must be submitted. (if the original copy was submitted, it will be returned after it is checked against the copy.)
- If there is any falsified information on the application, etc. or the submitted documents are incomplete at the time of the document screening (step 1), the applicant is considered "failed" and will be excluded from the interview and performance test.
- Even after being admitted, the admission may be rescinded if the applicant is later discovered to have applied through illegal means such as false or counterfeit materials.
- The application cannot be changed or canceled after submission. Please be careful when filling out the application for any inadequacies due to erroneous, omitted or inaccurate information are entirely applicant's responsibility.

III. Others

1. Curriculum and Selective Courses

- Requirements to acquire a Ph.D. degree
 - 1) 36 credits of courses
 - 2) Qualifying exam
 - 3) Publication of at least one paper in academic journal,

4) Presentation of at least one paper in an international conference

5) Dissertation

○ Selective Courses (3 credits each)

1) Department of Agricultural & Resource Economics <http://agecon.kangwon.ac.kr/>

Agricultural Economics	Rural Survey and Practices
Agricultural Development	Economic Statistics
Agricultural Policy	Microeconomics
Farm Management	Advanced Agribusiness
International Agricultural Trade	Theory of International Trade
Advanced Econometrics	Agricultural Industry Structure
Agri Business	

2) Department of International Trade <http://itb.kangwon.ac.kr/>

Foreign Trade Practice	International Monetary Theory
Research Methodology	International Trade Theory
Empirical Research International Economics	International Economic Policy
Econometric Analysis and Applications	Studies on the Northeast Asian Economy
Studies on the Asia-Pacific Economy	Special Topics in International Economics
International Contract Law	Special Topics in WTO System

2. On-Campus Accommodations

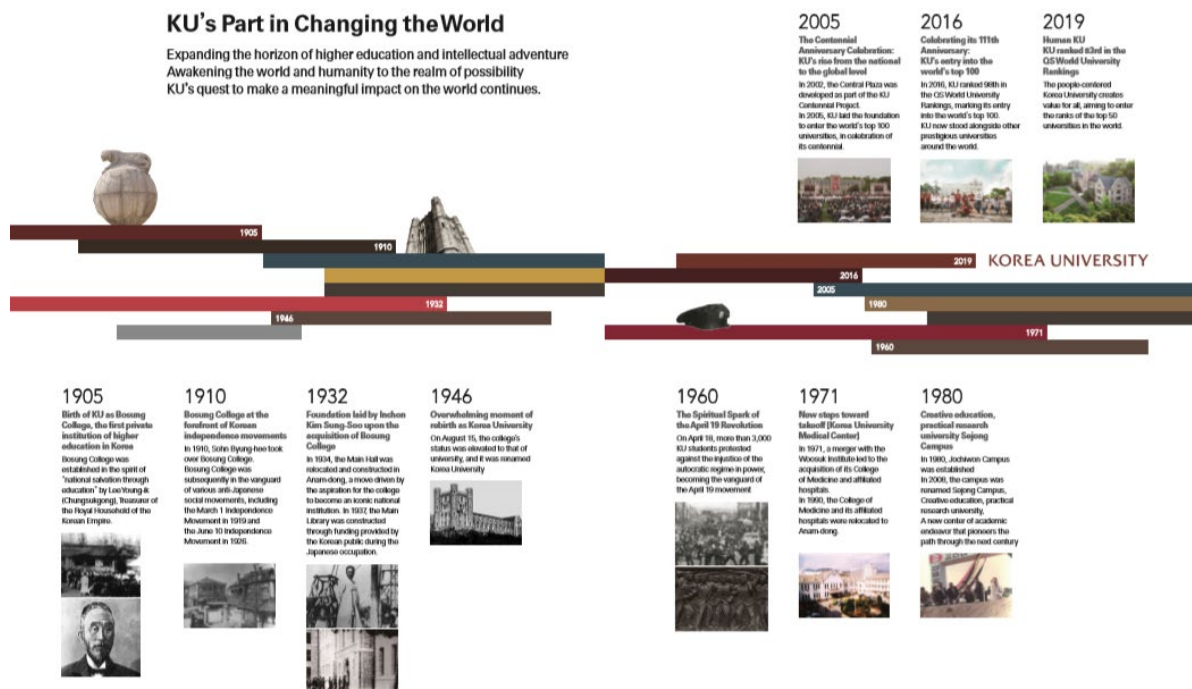
A. Dormitory

Name of Dormitory	Room Type	Housing (including meals+ deposit / one semester)	Remarks
SaeRomGwan	For 2 people	561,390won	
Global Dormitory	For 2 people	588,150won	Available for cook
	For 4 people	507,120won	
	Family Room	1,692,650won	

ATTACHMENT #2-5 KOREA UNIVERSITY

I. Overview of the University

1. History



- 1905. Bosung College is founded as the first private university
- 1932. Under the leadership of Incheon Kim Sung-su, Bosung College was merged. a main library was built
- 1946. Approval to establish a university was obtained, Bosung College is elevated into Korea University
- 1949. The KU Graduate School (MAster's and Doctoral programs) was established
- 1953. The first master's degrees were conferred (to four graduates).
- 1971. The Korea University Foundation assumes control over the Woosuk School Corporation, incorporating Woosuk University and its affiliated institutions
- 1977. Master's students were recruited for 43 departments in six divisions and doctoral students for 39 departments in six divisions.

- 1980. Korea University receives approval to establish a branch campus in Jochiwon. The graduate administration was expanded and divided into three systems: the humanities and social sciences, natural science, and medical science.
- 1996. The interdisciplinary collaboration program was created.
- 2002. The integrated Master's and Doctoral program was created.
- 2003. KU transitioned to a research-oriented university system.
- 2005. Korea University's centennial
- 2011. The dual degree system was adopted and expanded.
- 2014. The Accelerated Bachelor's-Master's program was established.
- 2016. World's 100 top university; KU ranks 98th in the QS World University Rankings
- 2019. KU ranks 83rd in the QS World University Rankings Departments categorized by campus and division were established.
- 2020. KU ranks 69th in the QS World University Rankings

2. Key Information

Korea University, founded in 1905, is widely acknowledged as one of the country's oldest, largest and top-ranked universities in Korea. Its reputation for quality is based on excellence in teaching, research and service to Korean society. Eminent faculty, outstanding students and internationally recognized research programs all contribute to Korea University's academic fame. KU was ranked 83rd in the World University Ranking 2019 climbing 3 places from last year's, 12th in Asia and 1st among Korea's comprehensive private universities released by Quacquarelli Symonds(QS). KU is considered a world class research-oriented university and stands among the top 100 universities in 26 out of 48 subjects within five academic disciplines-Arts & Humanities, Social Science & Management, Engineering & Technology, Life Science & Medicine, and Natural Science areas evaluated.

Korea University is also a leader in the development of international education programs. Having KU global campuses located around the world has allowed KU to leverage key partnerships for student exchanges as well as special educational experiences. In addition to sending over 1,250 students abroad each year on student exchanges, KU welcomes 4,700 international students consisting of short-term visiting students as well as 2,200 degree-seeking students.

KU is nationally recognized for its commitment to teaching and academic excellence. The university's academic breadth is extensive with its 81 departments in 22 colleges and divisions, and 23 graduate schools

and it has over 1,700 full-time faculty members with over 95% of them holding Ph.D. or equivalent qualification in their field.

In research, KU is an internationally recognized leader with over 136 research centres, including the East Asiatic Research Centre and the Korean Cultural Research Centre. Furthermore, Korea University Business School was the first business school in the country to have acquired both European Quality Improvement System accreditation, in combination with the accreditation granted by the Association to Advance Collegiate Schools of Business.

Korea University ranked 1st among Korean universities for the first time in a ranking of universities in Asia. In the 2021 Asia University Rankings of Quacquarelli Symonds (QS), a British company that analyzes universities around the world, Korea University (President Chung Jin Taek) was ranked 11th overall and 1st among Korean universities.

The QS Asia University Rankings was launched in 2009, and this is the first time that Korea University topped the list among Korean universities. In last year's rankings, the university took first place among private universities in Korea for the fourth time in a row, but trailed behind KAIST and Seoul National University in the overall rankings.

While most Korean universities fared more poorly this year than last, Korea University climbed from 12th to 11th place in Asia. It has ranked first among Korean universities for three consecutive years in international research network, and clinched the top spot this year thanks to its consistent performance in employer reputation and research reputation.

The QS Asia University Rankings has ranked universities in Asia since 2009 based on 11 indicators, among which the category of international research network was introduced as an indicator in 2018.



The weighting of the 11 indicators used in the QS Asia University Rankings is as follows: academic reputation amounts to 30% of the total score, employer reputation is at 20%, faculty/student ratio is at 10%, international research network is at 10%, citations per paper is at 10%, papers per faculty member is

at 5%, proportion of staff with a PhD is at 5%, proportion of international faculty is at 2.5%, proportion of international students is at 2.5%, proportion of inbound exchange students is at 2.5%, and proportion of outbound exchange students is at 2.5%. This leads to a more detailed evaluation than that of the QS World University Rankings, which relies on six indicators.

II. Academics

1. Academic Programs

<http://graduate2.korea.ac.kr/gradeng/department/major.do>

<http://ace.korea.ac.kr/>

○ Graduate School (Doctoral Programs)

Division	Department	Remarks
Engineering	Department of Civil, Environmental and Architectural Engineering	<ul style="list-style-type: none"> •Built Environment •Smart Construction & Mobility •Water & Ecosystems •Energy Systems

Major field	Professor	Major
Built Environment	Prof. Kang, Young Jong	Steel structure
	Prof. Lee, Woojin	Geotech. eng.
	Prof. Yoon, Young Soo	Structural eng
	Prof. Kong, Jung-Sik	Structural analysis
	Prof. Zi, Goangseup	Structural eng.
	Prof. Lee, Jong-Sub	Geotech. eng.
	Prof. Choi, Hangseok	Geotech. eng.

	Prof. Ju, Young K.	Arch. structural eng.
	Assist. Prof. Kim, Seungjun	Structural eng.
Smart Construction & Mobility	Prof. Cho. Hun-Hee	Construction managment
	Prof. Cho, Hun-Hee	Construction management
	Prof. Yi, Chongku	Construction materials
	Prof. Kang, Seungmo	Transportation eng.
Water & Ecosystems	Prof. Kim, Joong Hoon	Water resources
	Prof. Kim, Jeehyeong	Environmental eng.
	Prof. Yoo, Chulsang	Water resources and river Eng.
	Prof. Hong, Seungkwan	Environmental eng.
	Prof. Paik, Kyungrock	Surface hydrology
	Prof. Park, Hee-Deung	Environmental eng.
	Prof. Lee, Jaesang	Environmental eng.
	Assoc. Prof. Son, Sangyoung	Fluid mechanics and coastal hydraulics
	Assist. Prof. Jung, Donghwi	Water resource engineering
Energy Systems	Prof. Kim, Dong-Wan	Energy
	Assoc. Prof. Noh, Jun Hong	Reneable energy
	Assoc. Prof. Heo, Yeonsook	Urban energy and microclimate

2. Application and important notes for applicants

A. Application Period: Fall 2022 (Foreigners): March 7 ~ March 25, 2022.

※ The dates are subject to change due to the COVID-19 situation.

※ All dates and times are based on Korea Standard Time (KST).

B. Eligibility

- ※ Applicants holding foreign citizenship whose parents are foreign (not Korean) citizens.
- ※ Citizenship status is determined at the time of application submission.

C. Language Proficiency Requirements

- ※ It can be changed regarding government education policy.
- ※ Please submit one or more of the following documents.

A. Korean	A score report of TOPIK level 3 or higher
B. English	1) TOEFL IBT 80 (My Best Score is acceptable) or higher The Institutional Testing Program(ITP) TOEFL and TOEFL Home Edition are NOT acceptable. 2) Academic IELTS 5.5 or higher The IELTS Home Test(Indicator) is NOT acceptable. 3) New TEPS 327 or higher

D. Procedures

1) Document Submission

- a) Submission period: March 7 ~ March 25, 2022.
- b) All supporting documents must arrive by the stated deadline(Korea Standard Time).
 - ※ In case of COVID-10 related shutdown, only postal mail available.
- c) Office closed on weekends and public holidays.
- d) Please use certified mail, parcel service or international express mail with a tracking number in order to check the delivery status to avoid delays or delivery failures.
 - ※ **Address: Graduate School Admission Team, Korea University, Room 126B, Graduate School Library, 145 Anam-ro, Seongbuk-gu, Seoul, 02841, Korea (+82-2-3290-1358)**

2) Interview

- a) When: Late March ~ April, 2022 (subject to change)

3) Notification of the Admissions

Higher Education for ASEAN Talents (HEAT):
Scholarship Opportunity for ASEAN Faculty Members in the Republic of Korea



- a) Notification Date: Late June, 2022 (Subject to change)
- b) The result will be informed directly to student individually(via e-mail)

E. Required Documents

- ※ All documents must be translated in English or Korean with notarization.
- ※ Only original copy of documents (published within 3 months) are acceptable.

3. Mandatory Documents for All Applicants

a) Application Form, Information release Form, Permission for study leave, Applicant agreement, Personal medical assessment

- Sign on the printed documents (download from the website)

(<https://graduate2.korea.ac.kr/gradeng/about/notice.do?mode=view&articleNo=146402&article.offset=0&articleLimit=10&srSearchVal=HEAT&totalNoticeYn=N&totalBoardNo=>)

- All important notices will be announced by e-mail. Please input two different e-mail accounts (gmail, hotmail, yahoo, etc.) accurately.

b) Recommendation Letter

- Must be from professors (academic advisors) of one's previous (last) university (No specific form)

c) Official (Expected) Graduation Certificate and Transcript of University (BA, MA, Ph.D.)

※ **Must obtain apostille stamps or consular authentication**

- All documents must be translated in English or Korean with notarization.
- Only original copy of documents are acceptable.

d) Study Plan

- No specific form

e) Resume/Curriculum Vitae

- No specific form (Self-introduction form is not acceptable.)

f) Proof of Language Proficiency

- Authorized language proficiency test score of English or Korean (TOPIK, TOEFL iBT, IELTS Academic, TEPS) within the validity period.

g) Proof of Bank Balance or Financial support form by the professor of Korea University (Professor's certificate of employment is required)

- (1) A proof of bank balance in the applicant's or parent(s)' name with minimum balance of
Seoul campus - USD 20,000 or the same amount of the applicant's home country's currency
(Monetary unit must be written).
- (2) A bank account should be froze with the required minimum balance by August 31, 2022.

- (3) A proof of bank balance must be issued within 30 days as of application submission.
- (4) When the applicants apply for a student visa from Korean Embassy or Immigration, all applicants must submit a bank balance statement (The financial support form will not be acceptable).
- (5) In case of the successfully admitted students, they should submit the original copy of bank balance statement which is issued in June 2022 again.

h) Photocopy of the Passport Information (photo) Page of the Applicant and Parent(s)

- In case parent(s) do not hold valid passports, a photocopy of their official ID may be submitted in lieu of a passport.

i) Family Register / Relationship Certificate

- Birth certificate of the applicant, family register, resident registration or certificate of family relations to confirm the relationship between the applicant and parent(s).
- All documents must be translated in English or Korean with notarization

j) Portfolio

- Applicable to the area of design in Architectural Planning applicants only
- Portfolio should be printed on A4, with each sheet containing only a single piece of work.

2. Required Documents for additional proof

Cases	Documents
Parent's Death	▪Certificate of Death
Parents' Divorce	▪Documents that display proof of parental authority and custody ▪Remarriage Certificate of the parent who has applicant's parental authority and custody
Single-parent Family	▪The document provided by KU must be filled in and submitted with an official confirmation certified by a government institution (i.e., Embassy, domestic relations court etc.)

※ In case the applicant cannot submit one of those documents, other documents equivalent to the above documents may be submitted.

3. Notices for Submitting Documents

- The Graduate School Admission Team must receive the original documents by the designated deadline (2022. 3. 25, Korean Standard Time).
- All submitted documents must be clear and legible. If not, the applicant may be responsible for any disadvantages that may occur as a consequence.
- Documents that are not in Korean or English must be translated and publicly notarized.
- Translated documents by individual are not acceptable. All documents must be translated and notarized

- by a translator or translation agency.
- In the case of any uncertainty about an applicant's eligibility, the applicant may be asked for additional supporting documents.
 - The date of birth and spelling of applicant's name must be same as on the applicant's passport.
 - **All submitted documents are not returnable except the documents are issued only once.**
 - Students are required to provide apostille or consular authentication on all documents issued by overseas universities and the documents must be submitted to the Graduate School Admission Team by **June 30, 2022.**
 - No other type of authentication will be approved.
- a) Apostille confirmation: Designated Government/Agencies located in the country the applicant graduated
- b) Countries with Apostille Convention can be found at <http://www.hcch.net>
- c) Contact for consular authentication: Ministry of Foreign Affairs, Consular Services (+82-2-3210-0404)
- Concerning the following cases, admission may be denied or revoked:
 - a) Applicant who does not submit required documents or submits insufficient/incomplete documents.
 - b) Applicant who does not submit documents within the designated period
 - c) Applicant who fraudulently carries out the application process
 - d) Applicant who does not meet the eligibility criteria
 - e) Applicant who is considered to lack the required academic skills
 - If there is an inconsistency in the applicant's name on the application form and supporting documents, it is the applicant's responsibility to provide evidence to support that the documents are for the identical person.
 - A university transcript and certificate of attendance should be submitted from each university the applicant attended.
 - Any academic achievement without the submission of supporting documents may not be approved or accepted as official.
 - Any other details for the application review process will follow the general admission policies of Korea University.
 - When an applicant's scores are reported directly to KU, the applicant must provide one's date of birth, full name in English, and the date of the examination taken in order for the information to be included in the evaluation materials.
 - KU Graduate School Institution Number: ETS 7589
 - You can fill out the application form in either Korean or English.
 - The spelling of your name and the birth date must match those shown on your passport or other official documents in your country.

- Please refer to the website <http://graduate2.korea.ac.kr/gradeng/department/major.do> when filling out the degree, department, and major on your application form.
- Changes to admissions applications (e.g., degree, department, etc.) are prohibited after their submission.
- None of the submitted records and documents are returnable.
- Any further important notices will be announced by e-mail. Please indicate e-mail address and e-mail address 2 accurately. They should be different e-mail accounts (Yahoo, Hotmail, Gmail, etc.).
- Any false or misleading statement may disqualify you.
- Application documents received after the deadline will not be accepted.
- A student's application can be denied due to insufficient documents.
- Leaves of absence are not permitted for the first semester after admission. (In the case of illness, joining the military, or giving birth, a leave of absence is allowable with verification.)

4. HEAT Scholarship program

A. Scholarship Period

- 3 years of Doctoral programs (Sep 1, 2022 ~ August 31, 2025)

B. Benefits

- Roundtrip travel (one time only): Round-trip economy class ticket.
- Monthly Allowance: 1,100 USD per month.
- Relocation (Settlement) Allowance (one time only): 300 USD upon arrival
- Tuitions: All admission fees are waived by the host institution.
- Dissertation Printing Costs: 400~600 USD, depending on the actual costs.
- Language Training Fee and Medical Insurance: the amount coverage or benefits will vary depending on each university.
- Others: various incidental allowance depends on universities

C. KCUE requirements

- Applicants who have a citizenship of an ASEAN country, and is a professor working at a university in his/her home country.
- Applicants who are lecturing at a 4-year college/university * level of HEI: bachelor's degree or its equivalent.

- Applicants who have a highest educational attainment is a master's degree or its equivalent.
- Applicants who are in good health both physically and mentally to allow them to pursue their study while residing in Korea for the long term.
- Applicants who have discussed about their study leave with the university they originally belong to, as well as about how to contribute to their school after their return.
- Applicants who is younger than 45 years old as of the day that the doctoral course starts (i.e. September 1, 2022).
- Applicants who have sufficient level of proficiency in Korean language or English.

Point of Contact

Department	Name	Contact		
		Phone	E-Mail	Website
Korea University graduate school	department of graduate admission	Inquire via e-mail	admission: graduate1@korea.ac.kr	http://graduate2.korea.ac.kr/graden-g/index.do
School of Civil, Environmental and Architectural Engineering	Hyunju Lee	Inquire via e-mail	program: aseanace@korea.ac.kr	http://ace.korea.edu/ace_en/index.do

ATTACHMENT #2-6 KYUNG HEE UNIVERSITY

I. Overview of the University

History

- February, 1954. Foundation of Graduate School
- January, 1979 Foundation of Global Campus
- March, 1996 The First Winner of Comprehensive Ranking of Universities
- November, 1996 Foundation of Graduate School of Pan-Pacific International Studies
- September, 2011 QS Ranking 245th (Ranking 4th in Korea)
- October, 2014 Industrial-Educational Cooperation with Samsung Electronics
- December, 2018 NCIS Ranking 2nd for 4 years
- 2021 THE Asia-Pacific University Ranking 29st

Key Information

- 100% Acceptance to Dormitories
- Various Medical Service
- High Quality GYM to Enhance Students' Health
- A Myriad of SCI(E) Journals



Higher Education for ASEAN Talents (HEAT):
Scholarship Opportunity for ASEAN Faculty Members in the Republic of Korea



II. Academics

Academic Programs

- Graduate School (Doctoral Programs) <https://gskh.khu.ac.kr/index/> (Academics-Graduate)

Field	Department	Major	Remark
Humanities and Social Sciences	Korean Language and Literature		Korean
	Tourism		Korean/English
	International Korean Language and Culture		Korean
	British-American Language and Culture		English
Natural Sciences Engineering	International Development Cooperation		English
	Physics		
	Graduate School of Biotechnology		Korean/English
	Information Display		Korean/English
	Architectural Engineering		Korean/English
	Mechanical Engineering		Korean/English
	Civil Engineering		Korean/English
	Electronic Engineering		Korean/English
	Computer Science and Engineering		Korean/English

Application Requirements

1. Applicants who are academic faculty members at a 4-year college/university * in their home country (*Higher Education Institution offering bachelor's degree or equivalent courses)
2. Applicant having a master's degree or its equivalent.
3. Applicant must be in good health both mentally and physically to study in Korea in a long time.
4. Applicant must discuss his/her study abroad and be authorized by the faculty of professors at his/her workplace before application.
5. Applicant must be younger than 45 years old.(i.e September 1st, 2022)
6. Applicant must have a language competence of Korean or English. Please refer to the information about language eligibilities.

※ ASEAN: Brunei, Cambodia, Indonesia, Laos, Malaysia, Myanmar, Philippines, Singapore, Thailand, Vietnam

※ Language Proficiency (※ Only the test score obtained after October 1st, 2018)

[Korean]

Applicant must meet at least one of the four conditions below

- a. TOPIK Level 4 or above
- b. Graduated from majoring in Korean in a foreign country
- c. Study in a University in Korea more than 2 years and get a degree

[English]

Only for Applicants for British-American Language & Culture and all natural sciences and engineering.

- d. Official Test Score above TOEFL(PBT 550, CBT 210, iBT 80), IELTS 6.0, TEPS 600 (NEW TEPS 326)
- e. Regardless of 'a~d', English native speaker or a citizen of a country where English is an official language does not need to meet the language conditions.

[Specific Eligibility]

Only applicants for physics

Applicant who does not meet the conditions 'a~c' can be enrolled at graduate school under a condition that a student has to take Korean classes at the language center on campus and submit the certificate(TOPIK Level 4 or above) of completion to graduate school office before thesis qualification test.

※ The List of Required Documents

Documents	Remark
Permission for Study Leave	HEAT Form 1
Applicant Agreement	HEAT Form 2
Personal Medical Assessment	HEAT Form 3
Application Form	
Certificate of Graduation(Bachelor and Master) ※ Apostille or Verification by Korean Embassy is mandatory.	<ul style="list-style-type: none"> ▪Include the registered degree number. If it does not contain the degree number, applicants should submit 'Certificate of Degree' separately. ▪Graduated students: Documents certifying the highest level of education you have completed must be verified by the Korean Embassy or Apostille Verified. (This verification is not required to domestic university graduates.)
Official Transcripts from undergraduate institution and graduate institution	<ul style="list-style-type: none"> ▪Write down your overall GPA and percentage just as same as your transcript ▪If your transcript has only one of the two, you may convert your score referring to the conversion table ▪If the transcript does not have the given scale of GPA or percentage, applicants should issue an official letter that shows the overall GPA or percentage from the undergraduate (graduate) institution ▪If issuing an official letter is impossible, you should print out and submit the result of WES iGPA Calculator (http://www.wes.org/students/igpacalc.asp) or the result from Foreign Credits Website (www.foreigncredits.com)

Language Proficiency Certificates (TOPIK, TOEFL, IELTS, TEPS, etc.)	<ul style="list-style-type: none"> ▪Transfer students : submit previous university transcripts ▪Only the test score obtained after 1st of October, 2018.
Personal Statement & Study Plan*	▪<Attachment 1>
Recommendation letter written by the president of the school you are working for	▪<Attachment 2>
Employment Certificate, Career Certificate, Certificate of Volunteer Activity, Awards, or Published papers	<ul style="list-style-type: none"> ▪Must be written either in Korean or English. If not, applicants must accompany a complete Korean or English translation, authenticated by the issuing institution or notarized by a notary public.
A copy of your passport	▪Valid passport which is not expired
Documents that certify the applicant and the applicant's parents' citizenship and relationship	<ul style="list-style-type: none"> ▪Applicants must prove ① Parents' nationality and ② Family relationships ▪Birth Certificate, Family register issued by government of the applicant's country, and so on. ※ In case of parents' death(divorce), a death(divorce) certificate submission is compulsory.
Signed Consent form*	▪<Attachment 4> (Autograph required)
Other Documents	<ul style="list-style-type: none"> ▪If applicants need to add some explanation related to eligibilities, they could submit additional paper and provements. (e.g. name change, transfer, ect.) ▪Students receiving scholarship from an institution in their country such as the Overseas Koreans Foundation must provide documentation for proof of scholarship.

Important Notes

- a. Applicant can submit an application to one department and one campus only.
- b. Please check to see if your documents arrive at the office. Kyung Hee University is NOT responsible for the loss of documents. Furthermore, applicants must write down their information correctly. Kyung Hee University is NOT responsible for the disadvantage caused by incorrect information.
- c. Application information like campus, department, specific major, etc must be filled out exactly, since they cannot be revised after the payment.
- d. If any ineligible/unqualifying factors are found during screening, the applicant will be expelled from the admission. Furthermore, even after being selected as final admitted student, if any false statement or the qualification that violates the school rule is revealed(for example, if the degree obtained is found false in the process of verifying the degree through academic inquiry), the entrance and the registration may be canceled. The disadvantage caused by these kinds of faults is the applicant's responsibility and the tuition fee will not be refunded.
- e. If necessary, Kyung Hee University can ask applicants to submit additional proof even if it is not on the list.
- f. According to the article 36 of the graduate school regulation of Kyung Hee University, international students must have a medical insurance until graduation on their own expenses. The medical insurance fee will be included in each semester tuition bill. (International students who do not have medical insurance are excluded from scholarships and various programs.)
- g. According to the article 37 of the graduate school regulation of Kyung Hee University, all international students must take a health examination. The medical examination fee will be included in the semester tuition bill.
- h. Leave of absence for the first semester is not allowed. Only the leave of absence owing to circumstances beyond control such as illness or pregnancy is allowed.

Programs to support international students

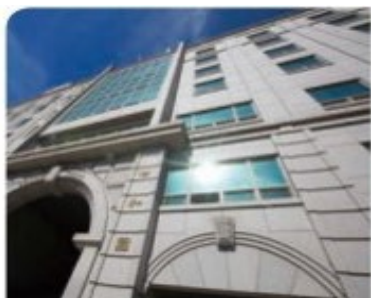
- a. Study and Korean Study Support Program for Foreign Students
- b. Safety and Health Program for Foreign Students
- c. Korean Cultural Experience Program for Foreign Students
- d. Global Citizen Program for Foreign Students

Higher Education for ASEAN Talents (HEAT):
Scholarship Opportunity for ASEAN Faculty Members in the Republic of Korea



Dormitory

Dorm	Facilities
Sewha Hall (Seoul Campus)	<ul style="list-style-type: none"> - Double : 1,054,000 KRW per 1 Semester (including 60,000 KRW deposit) : Bedroom(23.8m²) - 216 rooms accommodating 432, study room, Housing Office, laundry room, convenient store, Fitness Club, Table tennis facility - Homepage : http://sewhahall.khu.ac.kr/
Woo Jung Won (Global Campus)	<ul style="list-style-type: none"> - Double : 1,364,000 KRW per 1 Semester (including 100,000 KRW deposit) - Double(two-stories-bed with desk underneath) : 1,168,000 KRW per 1 Semester(including 100,000 KRW deposit) - Triple : 972,000 KRW per 1 Semester (including 100,000 KRW deposit) - Homepage : http://www.woojungwon.net/



Point of Contact

Department	Name	Contact			
		Phone	Fax	E-Mail	Website
Graduate School	(Seoul) Lee, Yong Sung	+82-2-961-0121~4	+82+2-961-9582	khsb2000@khu.ac.kr	gskh.khu.ac.kr
	(Global) Jeong, Hyunhyang	+82-31-201-3501~4	+82-31-204-8118	khwb6000@khu.ac.kr	gskh.khu.ac.kr