

MALAYSIA ENGLISH ASSESSMENT (MEA)



ASSESSING LANGUAGE PERFORMANCE

MEA1

Measures the ability of students to use and understand English as it is spoken, heard, read and written in academic and non-academic contexts in higher education. It includes both proficiency tests and other ongoing assessments.

MEA2

Assesses students' ability to complete real tasks in a variety of situations in relevant engagement sites. To accomplish the tasks, they require not only knowledge of English and the appropriate use of English within a given cultural and social context, but also relevant generic competences.

1

CO-CURRICULAR AND EXTRA CURRICULAR ACTIVITIES

Partners

Primary partners: peers
Other collaborators: university staff, government organisations, companies, NGOs

Purpose

To provide students with a wide range of authentic contexts and opportunities to communicate in English outside the classroom, where the focus is on meaning rather than on form

Domains & Settings

Educational, occupational, private and public
On-campus and off-campus



3

ONLINE RESOURCES

Partners

Primary partners: online platform hosts, content developers, local and/or abroad
Other collaborators: university staff, government organisations, companies, NGOs

Purpose

To make available online resources in order to engage English language learners and meet their needs

Domains & Settings

Educational, occupational, private and public
On-campus and off-campus



5

INDUSTRY-ACADEMIA COLLABORATION

Partners

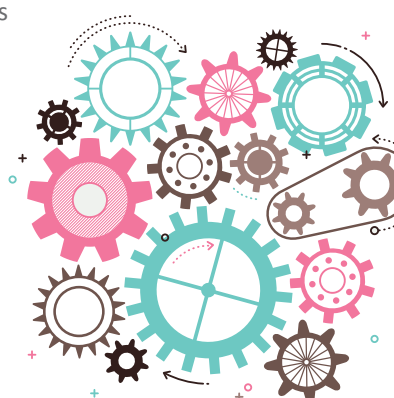
Primary partners: partners from industry
Other collaborators: Higher Learning Institutions (HLIs)

Purpose

To provide students with opportunities to use English in the context of the workplace and help them acquire employability skills by engaging with prospective employers

Domains & Settings

Occupational, educational, private and public
Relevant industry



2

INTER-DISCIPLINARY COLLABORATION

Partners

Primary partners: content lecturers and English teachers/lecturers
Other collaborators: practitioners

Purpose

To provide students with opportunities to engage in tasks and activities that will display their disciplinary knowledge and skills using English as a means of communication

Domains & Settings

Occupational, educational and public
On-campus and off-campus



4

COMMUNITY ENGAGEMENT

Partners

Primary partners: the Local community
Other collaborators: government organisations, schools, companies, NGOs

Purpose

To provide students with opportunities to use English in a community service programme that will help them acquire life skills and knowledge, and increase their social awareness and responsibility.

Domains & Settings

Educational, occupational, private and public
Local community



6

GLOBAL ENGAGEMENT

Partners

Primary partner: the global community
Other collaborators: The local community, including other universities

Purpose

To provide students with opportunities to network with global partners and improve global competency using English as a means of communication.

Domains & Settings

Educational, occupational, private and public
The global context



THE ECOSYSTEM FOR ENGLISH LANGUAGE LEARNING AND ASSESSMENT IN HIGHER EDUCATION



THE ECOSYSTEM FOR ENGLISH LANGUAGE LEARNING AND ASSESSMENT IN HIGHER EDUCATION

ASSESSMENT OF FORMAL LEARNING (MEA 1)



ASSESSMENT OF INFORMAL LEARNING (MEA 2)

WHAT IS A LEARNING ECOSYSTEM?

A holistic and integrated learning environment which engages students with English and involves them in meaningful and experiential learning and personal development.

HOW IT WORKS

Linking the formal and informal learning of English

Students can apply and practise what they have learnt in the classroom in real-life situations.



The focus is on communication, team work, human relations and on solving problems, involving the individual student and others in the learning environment and using the available resources, tools and technologies.

LEARNING ENGLISH AS WE USE IT AND USING ENGLISH AS WE LEARN

Students perform different types of communicative activity, including presentations, simulations, case studies, report writing, group discussions, games and role-playing.

THE LEARNING ECOSYSTEM REQUIRES PHYSICAL AND VIRTUAL SPACE, AND CONNECTIONS

Connections that bring students and students locally and abroad, and students and teachers together to help them grow intellectually.

Online resources, community engagement, global engagement.

A link between English activities in class and outside projects.
Co-curricular, extra-curricular activities and online resources.

Connections between EL teachers and lecturers and experts in other disciplines locally and abroad.
Interdisciplinary collaboration, global engagement

Partnerships between university and industry and beyond
Industry-academia collaboration, community engagement, global engagement

ACKNOWLEDGEMENTS

The Ministry would like to express its sincere appreciation and gratitude to all who have contributed to the development of The Ecosystem for English Language Learning and Assessment in Higher Education.

Contributors / Resource Persons

Dr. Aishah Binti Abu Bakar
Kementerian Pendidikan Tinggi
Prof. Dr Zuraidah Binti Mohd. Don
Universiti Malaysia
Prof. Dato' Tunku Mohani Tunku Mohtar
Universiti Pendidikan Sultan Idris
Prof. Dr Nuraihan Binti Mat Daud
Universiti Islam Antarabangsa Malaysia
Prof. Dr Hazita Azman
Universiti Kebangsaan Malaysia
Assoc. Prof. Dr Abdul Halim Abd. Raof
Universiti Teknologi Malaysia
Assoc. Prof. Dr Ainol Madziah Zubairi
Universiti Islam Antarabangsa Malaysia
Assoc. Prof. Dr Arshad Abd. Samad
Universiti Putra Malaysia
Assoc. Prof. Dr Saidatul Akmar Binti Zainal Abidin
Universiti Teknologi Mara
Assoc. Prof. Dr Ting Su Hie
Universiti Malaysia Sarawak
Assoc. Prof. Robijah Binti Kamarulzaman
Universiti Tun Hussein Onn Malaysia
Assoc. Prof. Dr Fatimah Puteh
Universiti Teknologi Malaysia
Assoc. Prof. Dr Siti Jamilah Bidin
Universiti Utara Malaysia
Dr. Kamariah Binti Yunus
Universiti Sultan Zainal Abidin
Dr. Noor Raha Mohd Radzuan
Universiti Malaysia Pahang

Dr. Elia Binti Md. Johar
Universiti Teknologi Mara
Dr. Shamsiah Binti Abdul Hamid
Universiti Malaysia Terengganu
Dr. Thilagavathi Shanmuganathan
Universiti Malaysia
Dr. Tam Shu Shim
Universiti Malaysia
Dr. Halizah Omar
Universiti Kebangsaan Malaysia
Dr. Chong Seng Tong
Universiti Tenaga Nasional
Dr. Chairazila Mohd Shamsuddin
Universiti Kebangsaan Malaysia
Encik Sasigaran A/I Moneyam
Universiti Pendidikan Sultan Idris
Puan Sharifah Salmah Syed Ali
Universiti Kebangsaan Malaysia
Encik Chandra Sakaran
Taylor's University Malaysia
Puan Norashikin Baharom
Talentcorp Malaysia
Puan Nadiyah Yan Abdullah
Universiti Pendidikan Sultan Idris
Puan Erdawati Binti Bakar
Universiti Pertahanan Nasional Malaysia
Puan Nurul Iman Bin Ahmad Bukhari
Universiti Malaysia Kelantan
Puan Nurhidayah Binti Reman
Universiti Teknologi Malaysia

Academic Development Management Division
Department of Higher Education
Ministry of Higher Education